

NEW IN BUSINESS

A.G. Edwards moving office to Hollywood Rd

ST. JOSEPH — A.G. Edwards & Sons Inc. is moving its St. Joseph office May 7 to 4035 Hollywood Road in Royalton Township, in front of Roger's Foodland.

The St. Joseph office has been in operation for 17 years and has five financial consultants. Craig Herrington is vice president and branch manager.

Becky Young, a financial associate at the office, said they are moving from 2090 Niles Road in St. Joseph Township because they need more space.

The new telephone number will be 408-1776. The toll-free number will remain the same, (800) 944-7301.

A.G. Edwards & Sons offers a variety of investment products and services that can help people meet their financial goals and objectives. The

company was founded in 1887 and has more than 700 offices nationwide and European locations in London and Geneva.

Bearclaw Coffee Co. opens in St. Joseph

ST. JOSEPH — Bearclaw Coffee Co. opened April 16 at the former site of Hava Java at 2108 S. Cleveland Ave., across from Martin's Super Market.

Debi Scroggins said she and her husband, Doug, opened the first Bearclaw Coffee Co. in June 2002. Now there are 20 Bearclaws throughout Michigan and another 40 sites in development.

Scroggins, who is from Ann Arbor, said Bearclaw offers hot and cold gourmet specialty coffee products, signature frozen mochas and bakery items. She said their smoothies are all natural.

Hours are 6 a.m. to 7 p.m.

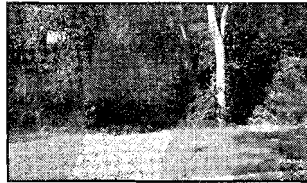
Monday through Friday and 7 a.m. to 7 p.m. Saturday and Sunday. Cindy Taylor is the St. Joseph manager. The telephone number is 326-0167.

The Web address is www.bearclawcoffee.com.

The Herald-Palladium welcomes

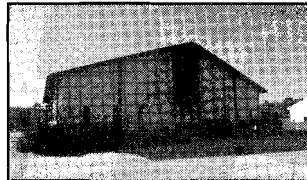
items from new businesses or from existing businesses that are undergoing significant changes, including expansions, relocations or changes of ownership. Items for "New In Business" can be e-mailed to newinbusiness@heraldpalladium.com, faxed to 429-4398, mailed to "New In Business," The Herald-Palladium, P.O. Box 128, St. Joseph MI 49085 or taken to the newspaper at 3450 Hollywood Road.

RESIDENTIAL LOT/COMMERCIAL LEASE



VACANT LAND FOR SALE

Build your dream home on this Hidden Isle lot with 150' of St. Joseph River frontage. Low bluff with excellent views. Located in a beautiful St. Joseph Township subdivision. \$280,000.



COMMERCIAL PROPERTY FOR LEASE

Highly visible commercial building in Lincoln Township for lease. 1215 sq ft of office space with attached 1895 sq ft warehouse space. Warehouse has two large overhead doors. Minimum one year lease plus security deposit. \$1900/month.

Call Don Kamp
269-429-6666 or 269-449-6666

MK MEREDITH
& KAMP
REALTORS